

4

3

2

1

# ISO View

Service Legend  
Unloading and  
Placement instructions

- A) **Electrical Requirements 480/3/60 VAC 50 Amp Service**  
(45 kVA step-up transformer required when only 208/240 service available-  
**NOT INCLUDED WITH MACHINE**)  
CAT5 network connection
- B) **Machine operation**  
Air Requirements 110 psi 35 cfm clean, dry air  
1 - 1/2" industrial interchange nipple or 1/2" NPTF
- C) **Water Requirements 40 psi 15 gpm**  
1 - GH fitting for saw coolant (Fresh or gray water filtered to 50 micron)
- D) **Waste water collection**  
2 - 2" NPTF connections  
(Tanks can be oriented to drain left or right of the machine)
- E) **Leave Minimum of 36 inches behind machine frame for maintenance and personnel clearance. Do NOT put machine directly against a wall or obstacle.**
- F) **Intesifier Pump Connections**  
Electrical - 480VAC / 3Ø / 60Hz or 240VAC / 3Ø / 60Hz  
Air Inlet - 1 scfm @ 86psi
- G) **Garnett Hopper Connections**  
Electrical - 120 - 240VAC / 1Ø / 60Hz  
Air Inlet - 90-120 psi @ Min 20 scfm

Refer to Sheet 2 for all service locations.

## Unloading and Placement

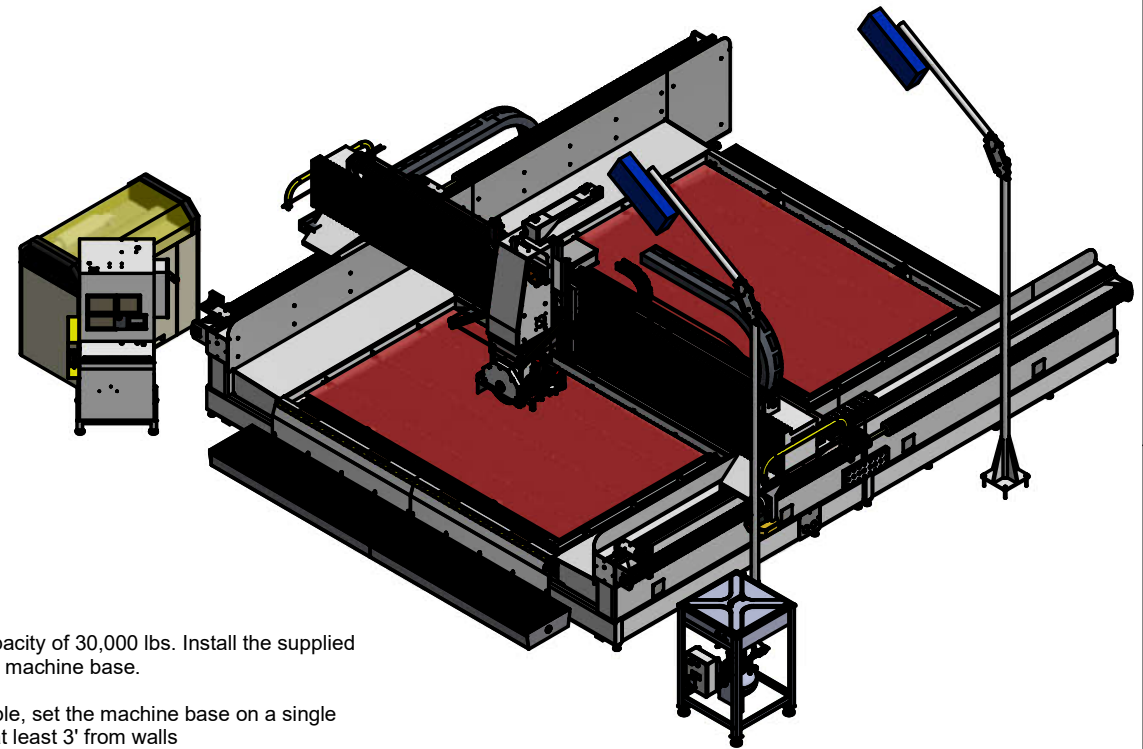
Lift the machine base from the bottom using a forklift with 8' long forks and a minimum lift capacity of 30,000 lbs. Install the supplied leveling feet before setting the machine base on the floor. (Not higher than 3 1/2" from floor to machine base.


The operating location of the machine should have 6" thick reinforced concrete floor. If possible, set the machine base on a single slab with no joints or structural cracks. The machine base, control cabinet should be placed at least 3' from walls or other obstructions to eliminate pinch points. Take care not to block any building exits. Avoid placing the machine in high traffic areas. Also, make sure that the selected location is well lit.

Once in place, rough level the machine base making sure that all of the leveling feet are touching the floor. It is desirable to have the machine base as low as possible to the floor.

Locate the machine control cabinet at front left of the machine base. Connect the flexible conduit on the machine base to the control cabinet. Note: If your machine was special ordered with a right hand cabinet, All "A)" connections will be on the opposite side of the machine.

Please contact Northwood (502) 267-5504 if you have any questions regarding the machine placement or service requirements.



 <b>Northwood</b> Machine Manufacturing Company <i>"Integrated Solutions. Real Results"</i>		
TITLE:		
SW138-SJ127-LT-SMSB-SWJ-DUAL		
SIZE: <b>B</b>	PART NUMBER: SW138-SJ127-LT-SMSB-SWJ-DUAL FLOORPLAN	REV: <b>A</b>
DATE: 2/8/2013	DRAWN: SCHMIDT	SHEET <b>1</b> OF <b>6</b>

4

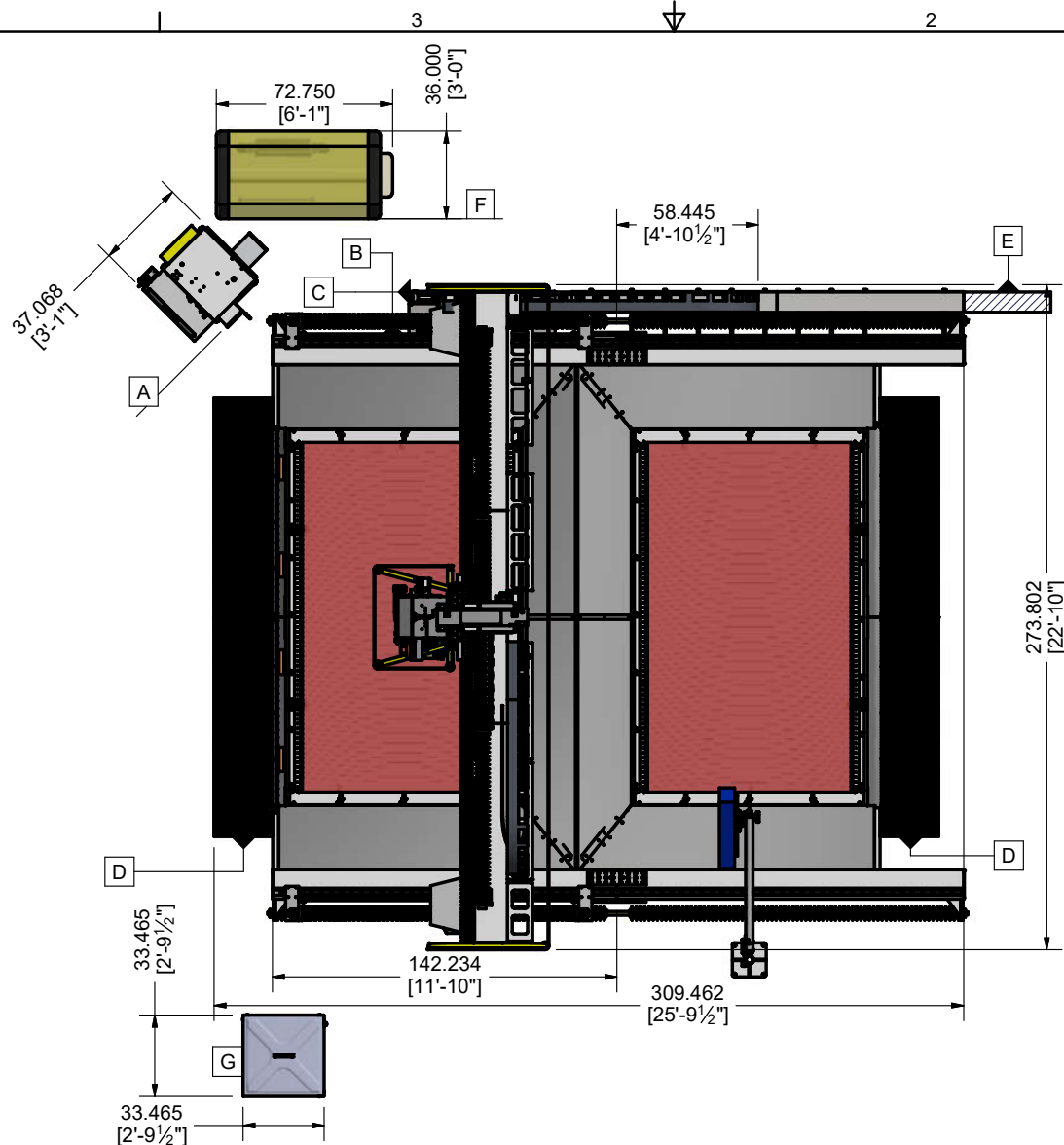
3

2


1

# Top View

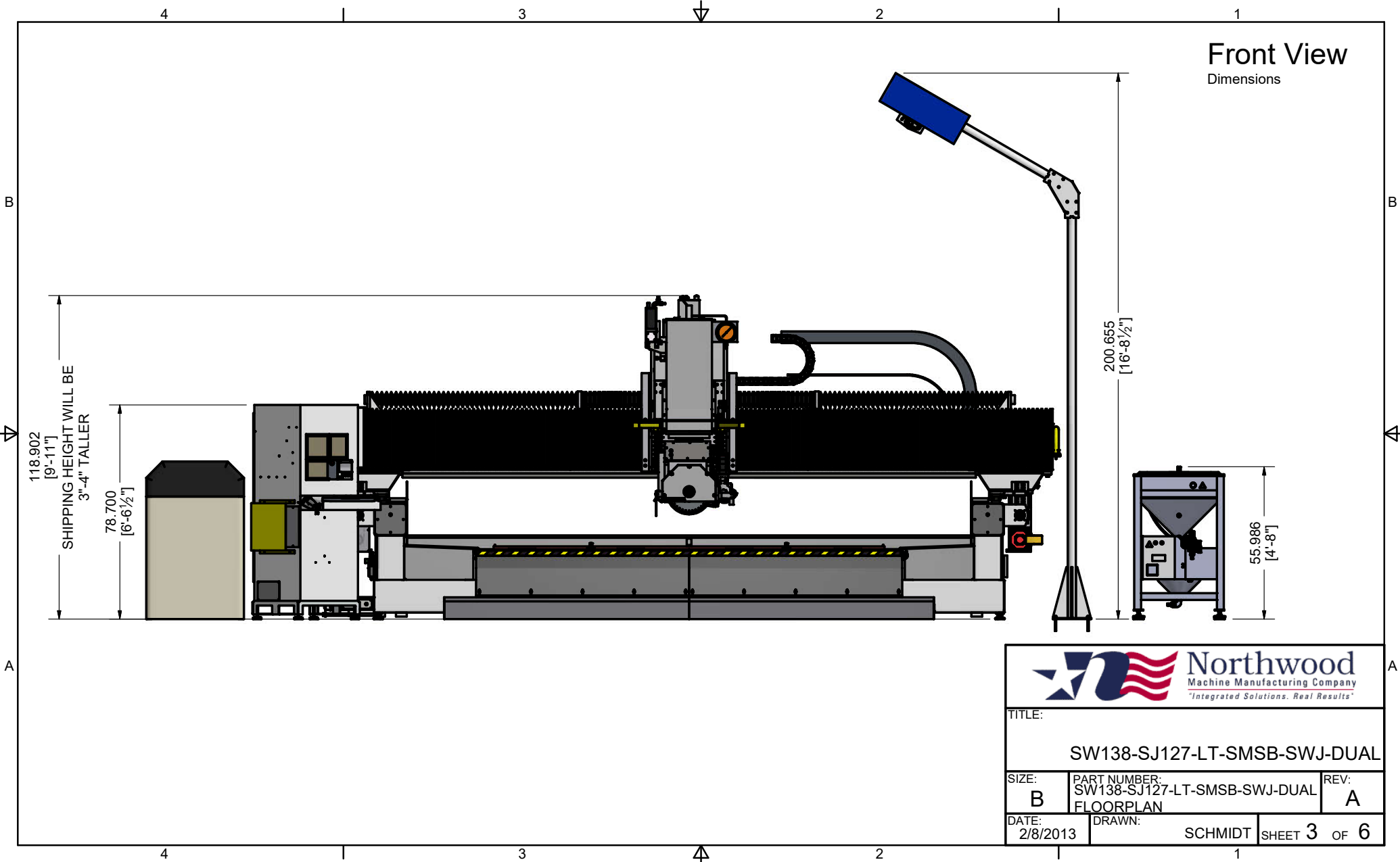
Service locations and dimensions  
Refer to Sheet 1 for datum legend



Note: If the machine was special ordered with a right hand cabinet, the cabinet service connections and the location of this cabinet unit will be on the opposite side.

 <b>Northwood</b> Machine Manufacturing Company <i>"Integrated Solutions. Real Results"</i>		
TITLE:		
SW138-SJ127-LT-SMSB-SWJ-DUAL		
SIZE: <b>B</b>	PART NUMBER: SW138-SJ127-LT-SMSB-SWJ-DUAL FLOORPLAN	REV: <b>A</b>
DATE: 2/8/2013	DRAWN: SCHMIDT	SHEET 2 OF 6

Front View  
Dimensions



TITLE:		
SW138-SJ127-LT-SMSB-SWJ-DUAL		
SIZE: B	PART NUMBER: SW138-SJ127-LT-SMSB-SWJ-DUAL FLOORPLAN	REV: A
DATE: 2/8/2013	DRAWN: SCHMIDT	SHEET 3 OF 6

4

3

2

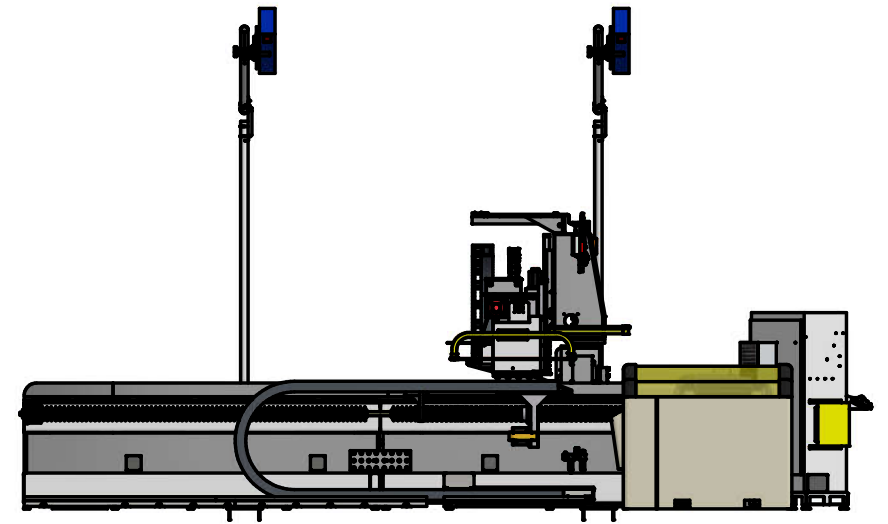
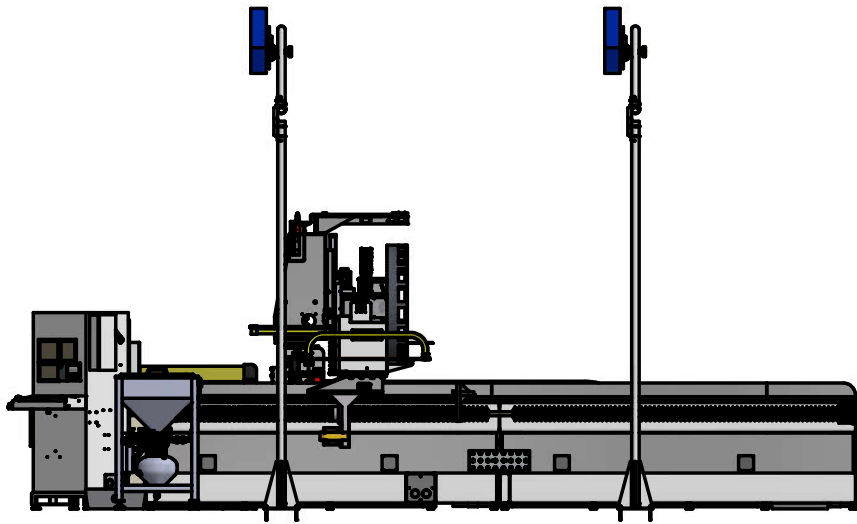
1



RIGHT SIDE

LEFT SIDE

Side View




B

B

A

A

 <b>Northwood</b> Machine Manufacturing Company <i>"Integrated Solutions. Real Results"</i>		
TITLE:		
SW138-SJ127-LT-SMSB-SWJ-DUAL		
SIZE: <b>B</b>	PART NUMBER: SW138-SJ127-LT-SMSB-SWJ-DUAL FLOORPLAN	REV: <b>A</b>
DATE: 2/8/2013	DRAWN: SCHMIDT	SHEET 4 OF 6

4

3

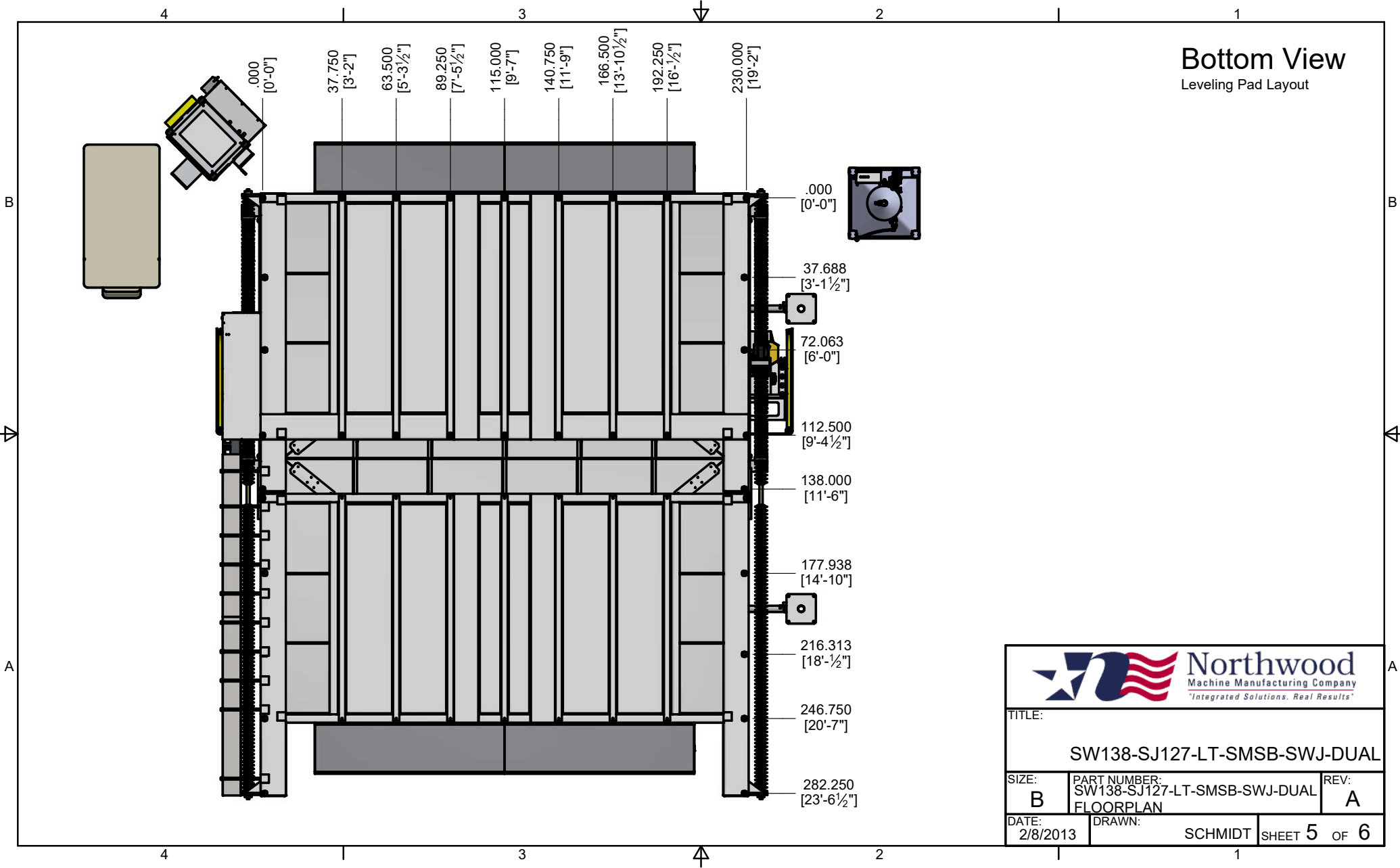



2

1

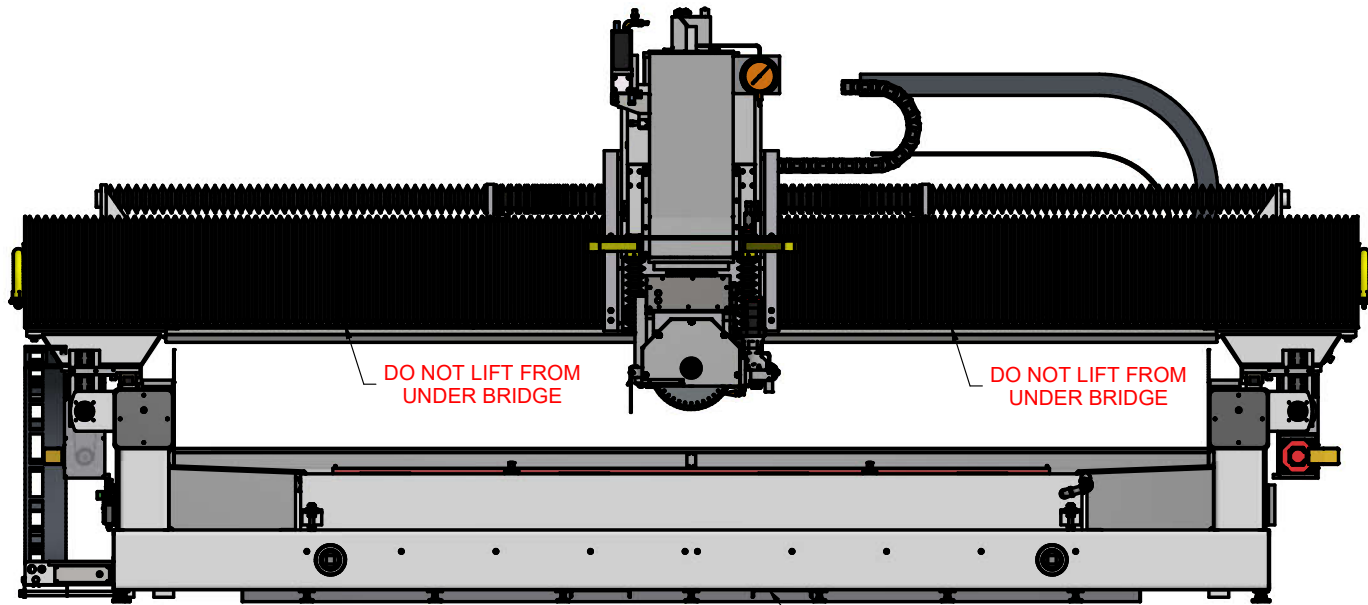
# Bottom View

Leveling Pad Layout



 <b>Northwood</b> Machine Manufacturing Company <i>"Integrated Solutions. Real Results"</i>		
TITLE:		
SW138-SJ127-LT-SMSB-SWJ-DUAL		
SIZE: <b>B</b>	PART NUMBER: SW138-SJ127-LT-SMSB-SWJ-DUAL FLOORPLAN	REV: <b>A</b>
DATE: 2/8/2013	DRAWN: SCHMIDT	SHEET <b>5</b> OF <b>6</b>

Front View  
Safe Lift Points




DO NOT LIFT FROM UNDER BRIDGE

DO NOT LIFT FROM UNDER BRIDGE

11.440  
[0'-11 1/2"]

47.940  
[4'-0"]

LIFT CHANNELS

 <b>Northwood</b> Machine Manufacturing Company <i>"Integrated Solutions. Real Results"</i>		
TITLE:		
SW138-SJ127-LT-SMSB-SWJ-DUAL		
SIZE: <b>B</b>	PART NUMBER: SW138-SJ127-LT-SMSB-SWJ-DUAL FLOORPLAN	REV: <b>A</b>
DATE: 2/8/2013	DRAWN: SCHMIDT	SHEET <b>6</b> OF <b>6</b>