

4

3

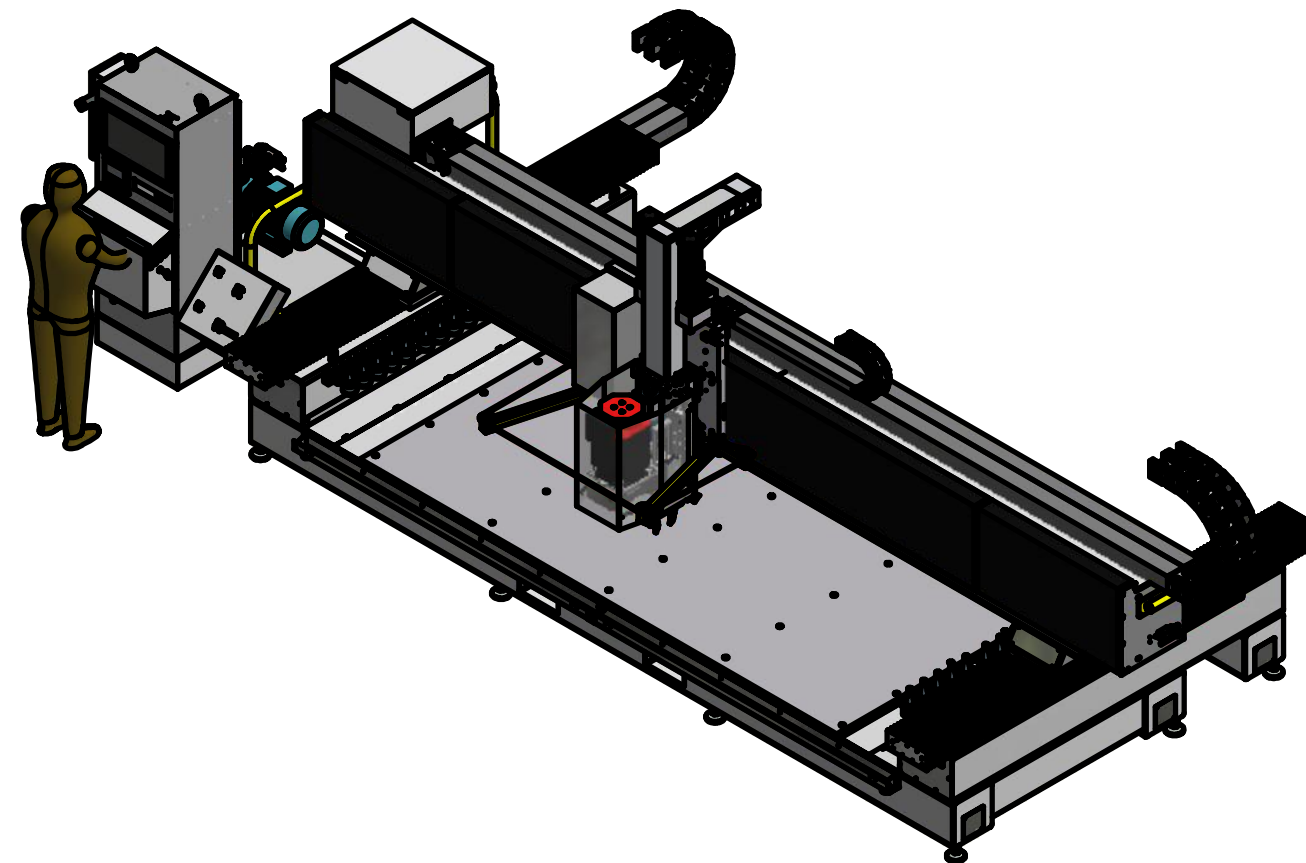
2

1

- A) Electrical Requirements 480/3/60 VAC 50 Amp Service  
Star Connection, Neutral Grounding, and PE  
(45kVa step-up transformer required when only 208/240 service available-  
**NOT INCLUDED WITH THE MACHINE**)  
CAT5 network connection  
Laser Only: Separate 120 VAC 15 Amp waterproof receptacle  
(Do not use receptacle inside the main electrical enclosure)
- B) Machine operation  
Air Requirements 110 psi 35 cfm clean, dry air  
1 - 1/2" industrial interchange nipple  
  
Part Flotation  
Air Requirements 110 psi 10 cfm air  
1 - 1/2" industrial interchange nipple
- C) Water Requirements 40 psi 15 gpm  
1 - GH fitting for halo (Fresh or gray water filtered to 50 micron)  
1 - GH fitting for through spindle (Fresh or gray water filtered to 25 micron only)
- D) Pump prime and make up water (Must be fresh water or strained with 50 mesh)  
1 - 3/4" NPTF connection
- E) Waste water collection  
2 - 2" NPTF connections
- F) Vacuum pump overflow  
1 - 1" NPTF connections
- G) Leave Minimum of 30 inches behind machine frame for maintenance  
and personnel clearance. Do NOT put machine directly against a wall or obstacle.

# ISO View

Service Legend  
Unloading and  
Placement instructions



Refer to Sheet 2 for all service locations.

## Unloading and Placement

Lift the machine base from the bottom using a forklift with 8' long forks and a minimum lift capacity of 30,000 lbs. Screw leveling feet all the way in before setting the machine base on the floor. (Not higher than 3 1/2" from floor to machine base.)

The operating location of the machine should have 6" thick reinforced concrete floor. If possible, set the machine base on a single slab with no joints or structural cracks. The machine base, control cabinet and vacuum pump should be placed at least 3' from walls or other obstructions to eliminate pinch points. Take care not to block any building exits. Avoid placing the machine in high traffic areas. Also, make sure that the selected location is well lit.

Once in place, rough level the machine base making sure that all of the leveling feet are touching the floor. It is desirable to have the machine base as low as possible to the floor.

Locate the machine control cabinet at front left of the machine base. Connect the flexible conduit on the machine base to the control cabinet. Note: If your machine was special ordered with a right hand cabinet, All "A)" connections will be on the opposite side of the machine.

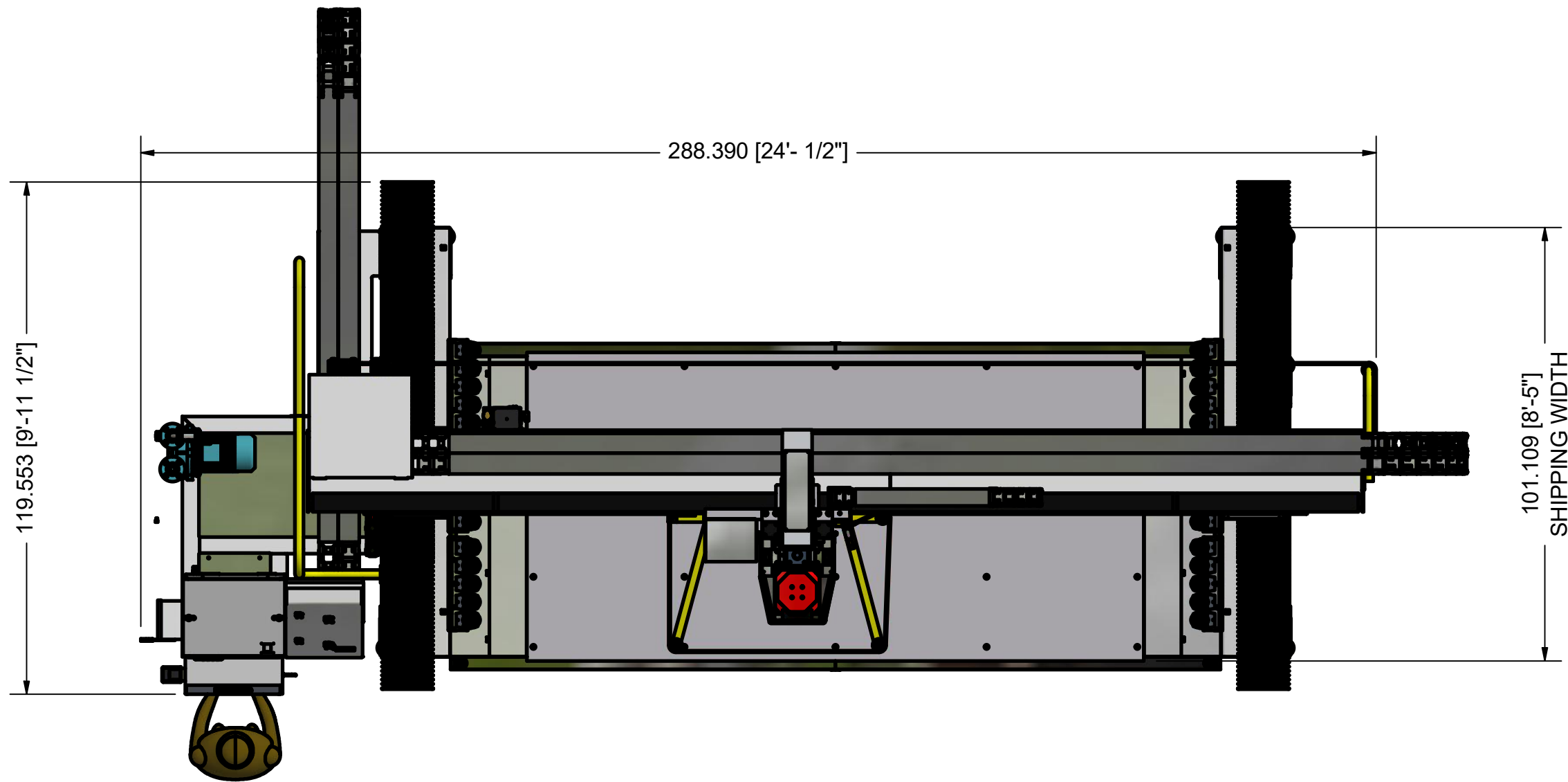
Please contact Northwood (502) 267-5504 if you have any questions regarding the machine placement or service requirements.



TITLE:		
SIZE: <b>B</b>	PART NUMBER: MAVERICK-FLOORPLAN	REV: <b>A</b>
DATE: 1/12/2024	DRAWN: CRIPE	SHEET <b>1</b> OF <b>6</b>

# Top View

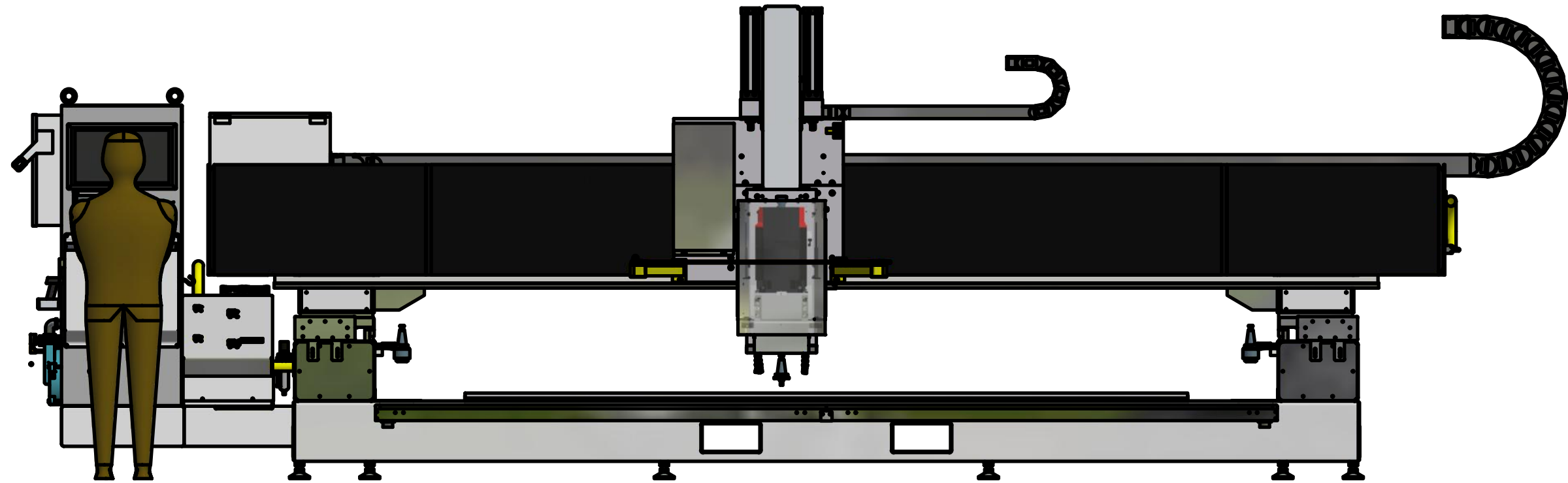
Service locations and dimensions  
Refer to Sheet 1 for datum legend



TITLE:		
SIZE: B	PART NUMBER: MAVERICK-FLOORPLAN	REV: A
DATE: 1/12/2024	DRAWN: CRIPE	SHEET 2 OF 6

# Front View

Dimensions

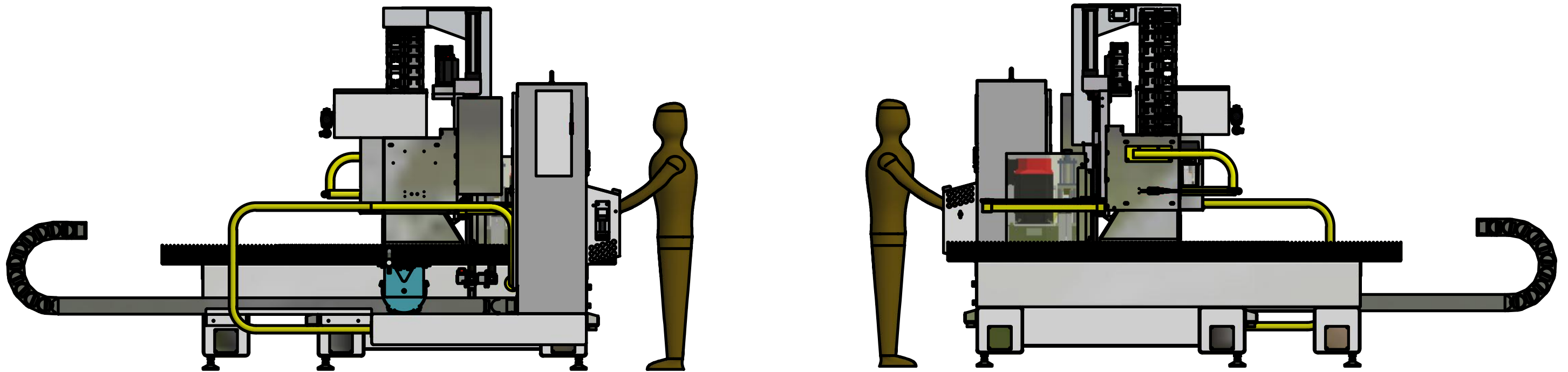


TITLE:		
SIZE: <b>B</b>	PART NUMBER: MAVERICK-FLOORPLAN	REV: <b>A</b>
DATE: 1/12/2024	DRAWN: CRIPE	SHEET <b>3</b> OF <b>6</b>

Side View

Left Side

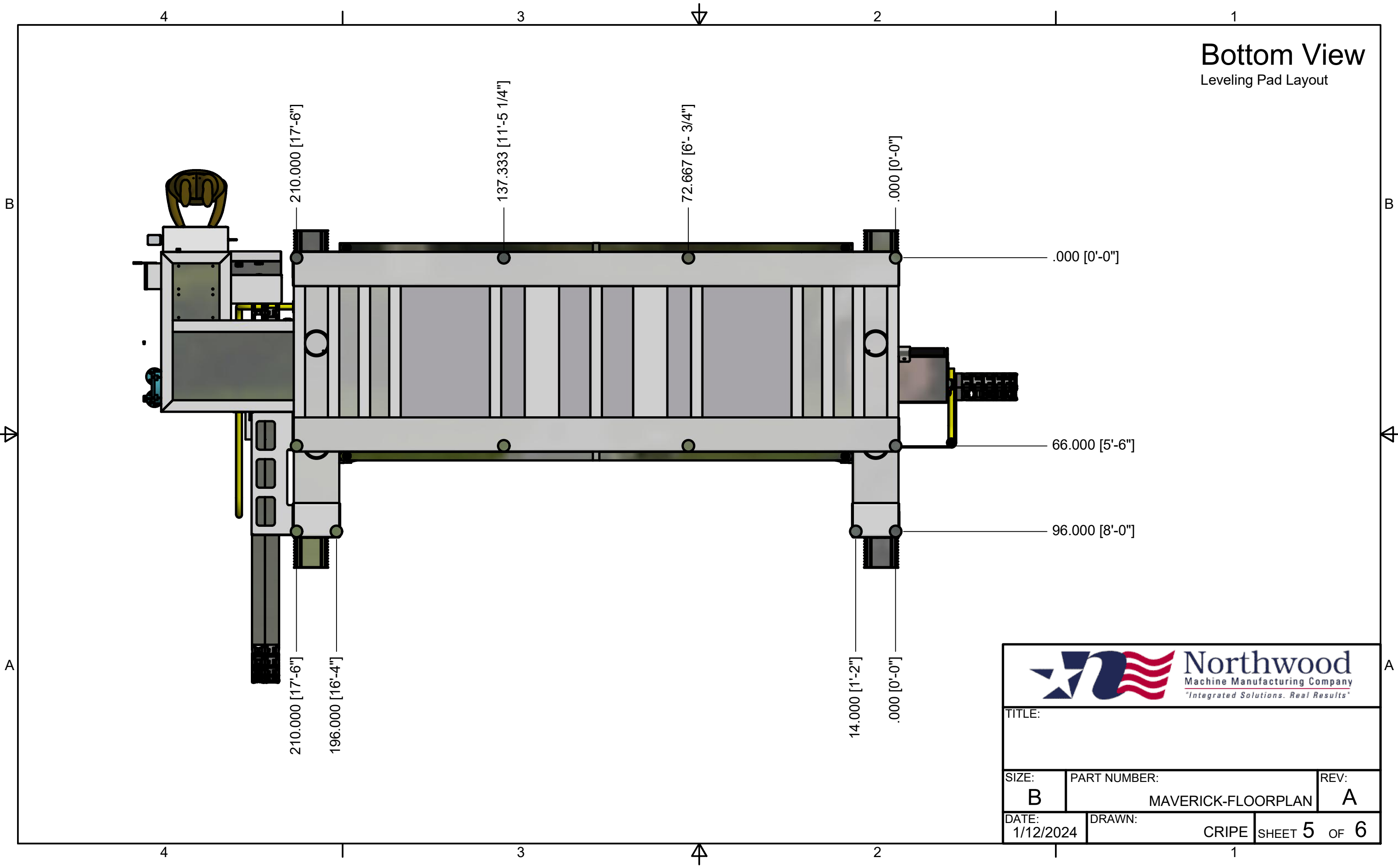
Right Side




TITLE:		
SIZE: B	PART NUMBER: MAVERICK-FLOORPLAN	REV: A
DATE: 1/12/2024	DRAWN: CRIPE	SHEET 4 OF 6

# Bottom View

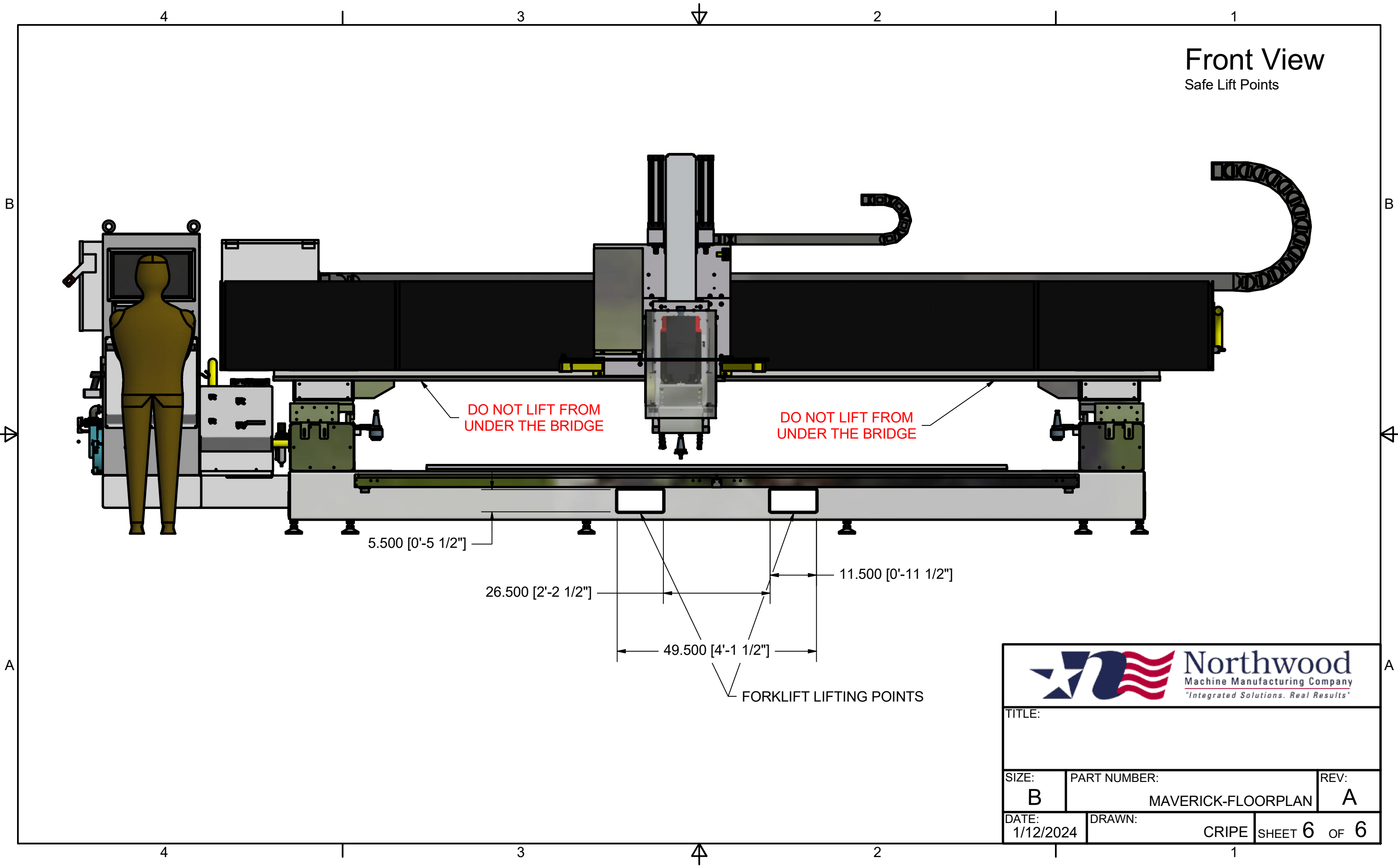
Leveling Pad Layout




 <b>Northwood</b> Machine Manufacturing Company <i>"Integrated Solutions. Real Results"</i>		
TITLE:		
SIZE: <b>B</b>	PART NUMBER: MAVERICK-FLOORPLAN	REV: <b>A</b>
DATE: 1/12/2024	DRAWN: CRIPE	SHEET <b>5</b> OF <b>6</b>

# Front View

Safe Lift Points



 <b>Northwood</b> Machine Manufacturing Company <i>"Integrated Solutions. Real Results"</i>		
TITLE:		
SIZE: <b>B</b>	PART NUMBER: MAVERICK-FLOORPLAN	REV: <b>A</b>
DATE: 1/12/2024	DRAWN: CRIPE	SHEET <b>6</b> OF <b>6</b>